



Associated
Catholic
Colleges

*"Excellence,
Honour and
Fairness in
Student Activities"*

EXPECTATIONS OF SCHOOLS

ACC SPORT



St Josephs
College



WHITEFRIARS
COLLEGE FOR BOYS

INTRODUCTION

The ACC sporting program involves a large number of participants, as well as coaching staff and spectators. There are expectations around conduct and behaviour that are strictly enforced so that the ethos of ACC sport is maintained at all times – EXCELLENCE, HONOUR & FAIRNESS.

This information package provides schools with a clear set of expectations, so that the sporting experience for all involved is a positive and enriching one. This information should be made available to all members of your school community annually. The package is set out in various sections:

1. Codes of Conduct
 - Participants
 - Coaches
 - Spectators
2. Welcoming visiting teams to your school
3. Visiting other schools
4. Expectations around ACC competition
5. Staff supervision – spectators
6. Maps of schools – sporting venues, car and bus parking
 - a. CBC St Kilda
 - b. De La Salle College
 - c. Emmanuel College
 - d. Mazenod College
 - e. Parade College
 - f. Salesian College
 - g. Simonds Catholic College
 - h. St Bede's College
 - i. St Bernard's College
 - j. St Joseph's College (Ferntree Gully)
 - k. St Joseph's College (Geelong)
 - l. Whitefriars College

Please take the time to read over the information provided so that you play your part in creating a fantastic sporting environment for all involved in ACC sport.

If you have any questions, please feel free to contact the Director of Sport at your school.

Paddy McKenna
ACC Executive Officer
www.accmelb.com.au

ACC COACHES' CODE OF CONDUCT

In an effort to set appropriate standards of behaviour for ACC sport, all ACC Coaches are expected to read, comprehend and commit to the following guidelines when coaching sport teams in ACC competition:



1. Ensure that all matches are played in the spirit of the ACC competition - "Excellence, Honour and Fairness in Student Sport". Ensure that good sportsmanship and good sporting skill each receive emphasis.
2. Reinforce ACC and school expectations regarding punctuality, behaviour, appropriate language and dress for all players at all age levels.
3. Demonstrate respect for the judgment of officials. Do not publicly question an umpire/referee's decision and avoid blaming a team's defeat on "poor umpiring".
4. Set the standard of behaviour for students in respecting the officials and players of the opposition. Avoid excessive ritual "psyching up" of your team and keep sideline talk to encouragement of your team only.
5. Develop team respect for the ability of opponents. Avoid consistently giving the impression that a lost match should have been won with a greater effort – acknowledge that sometimes the opposition is too skilled on the day.
6. Be responsible in ensuring a safe and friendly environment for the opposition. This includes adequate sideline supervision and ensuring that the barracking of student spectators and parents is constructive and appropriate.
7. Keep "winning" in perspective and maximise players' participation for fun and enjoyment.
8. Ensure that the atmosphere after the game between the two teams is acceptable by shaking hands with opposition coach and officials and encouraging students to do the same for their opponents.
9. Emphasise safety always; ensure that equipment and facilities are safe and keep informed with sound principles of coaching and skill development.
10. Recognise the importance of injury; seek and follow the physician's advice concerning the return of injured players to training and competition.
11. When drafting your match report for assemblies and school publications keep in mind that your report is a public document and as such derogatory remarks about other Colleges, opposition staff, student opponents and venues are to be avoided. Any negative criticism of opponents is to be forwarded to your Director of Sport for his action.
12. To facilitate results processing and the prompt return of ladders, make every effort to ensure your match scores are checked with opposition coaches and officials and submit your signed score sheets to your Director of Sport prior to class commencement the following day.
13. MOST IMPORTANTLY, ENJOY YOUR COACHING ROLE.

ACC CODE OF CONDUCT FOR STUDENT PARTICIPANTS

Congratulations on being selected to represent your school team in ACC competition. As part of your contribution to your team you are asked to carefully read and adhere to the points below:

1. You have the opportunity to participate in one of the best Melbourne schoolboy sports competitions so make every effort to perform at your best on and off the field.
2. Have knowledge of the rules and laws of the ACC and ensure you play by them. Copies of all the rules are available from your coach or by logging onto the ACC web-site at www.accmelb.com.au
3. Do not argue with officials. If there is a dispute, this should be brought to the attention of your coach, team manager or captain. These people can approach the official in a break of play.
4. Control your temper. Verbally abusing or provoking officials or other players is unacceptable.
5. Be a team player. Work equally hard for yourself and your team. You are the public face of your school, and your actions reflect on the school.
6. Be a good sport – noble in defeat and humble in victory. If you continue on with your sport you will regularly meet up with opponents from other schools so always acknowledge your opponents with a handshake at the end of games.
7. Treat all players fairly. Sledging, bullying, making rude gestures to, or taking advantage of, other players is not acceptable.
8. Co-operate with your team mates, coaches and opponents. Without these people there would be no competition.
9. Comments to any player on race, sexuality or religion are unacceptable.
10. ENJOY the opportunity to play sport with your schoolmates. After your school years are over, you will never get the chance to experience this again.



ACC SPECTATOR CODE OF BEHAVIOUR

As a spectator of any activity held by or under the auspices of *the ACC*, you must meet the following requirements in regard to your conduct during any such activity or event:

1. Respect the rights, dignity and worth of others.
2. Remember that each student participates in sport primarily for enjoyment.
3. Focus on the efforts and performance of the participants, rather than winning or losing.
4. Never ridicule or yell at participants for making a mistake or losing a competition.
5. Show appreciation for good performance and skilful play by all participants (including opposing players).
6. Demonstrate a high degree of individual responsibility especially when dealing with or in the vicinity of persons under 18 years of age, as your words and actions are an example.
7. Respect officials' decisions and encourage others to do likewise.
8. Do not physically or verbally abuse or harass anyone associated with the sport (player, coach, umpire and so on).
9. Respect the rights, dignity and worth of every young person regardless of their gender, ability, cultural background or religion.
10. Be a positive role model.



CHILD SAFETY

The ACC is compliant with the Victorian Government legislation regarding Child Safety and its policies and practices reflect best practice in this area. All schools and their community members are expected to abide fully with the legislative requirements at all times when they are involved in ACC events and activities.

WELCOMING VISITING TEAMS TO YOUR SCHOOL

It is suggested that the home school arranges a representative (student or staff member) to welcome visiting teams when they arrive and guide them to the relevant sporting venue. Every visitor should be made to feel welcome and should not be subject to a negative experience when visiting another school. This role could be allocated to the staff member on yard duty (provide them with prior notice), or a non-playing student that is involved with the home team.

VISITING OTHER SCHOOLS

A map of each school venue is included in this document. Please ensure that you abide by the parking guidelines for cars and buses.

At some schools, spectators will be required to sign in as a visitor. There are new legislative guidelines that have been introduced by the Victorian Government around child safety, and keeping track of visitors to each school plays an important role in this. Please abide by signs at the schools you visit and report to Reception as required.

EXPECTATIONS AROUND ACC COMPETITION

Whilst sport is based on competition between individuals or teams, that competitive element should not be the overriding factor in the school sport environment. Conduct of the team and each person associated with the team plays a critical role in the success of ACC sport. There are strict rules about student behaviour and also rules governing the conduct of coaches and spectators. These rules can be found on the ACC website under: SPORTS & EVENTS / Codes of Conduct. It is vital that these guidelines for conduct are adhered to.

STAFF SUPERVISION – SPECTATORS

The supervision of student spectators is an important part of making visitors feel welcome to your school. Our sporting program does not encourage a tribal mentality, and the home school students should never try to create an intimidating environment for visiting teams. Active supervision by your school's staff and student leaders will help to create an enjoyable atmosphere for all concerned. One of the great aspects of sport is the active involvement of spectators. Their support can add significantly to the sporting experience of the players, but adversely can also distract them from "focussing on the ball" and at times encourage actions that do not align with our focus on fair play and sportsmanship.

The conduct of one or two individuals can reflect very poorly on your entire school community. Play your part in upholding the reputation of your school and actively monitor the conduct of those around you.

THINK: RESPECT

R ESPECT
all participants & decisions



E NCOURAGE
everyone - this is school sport



S PORTSMANSHIP
No abuse tolerated



P LAY
for enjoyment



E DUCATE
& be knowledgeable



C ONDUCT
yourself courteously



T REAT
everyone fairly



CBC ST KILDA

10 Westbury St, St Kilda

Google map link: <https://goo.gl/maps/ScexYb4KpHm>



Map Details:

1. Alma Park – soccer & cricket
2. Main entrance – access via Westbury Street. Bus drop off / pick up and bus parking.
3. Car parking along Westbury Street – note that time limits apply.

Sport Entrance / Exit



DE LA SALLE COLLEGE

1318 High Street, Malvern (Tiverton Campus)

Google map link: <https://goo.gl/maps/VieM8h6Thy32>



Map Details:

1. Performing Arts Centre – table tennis
2. College Gymnasium – basketball, volleyball
3. Access to Performing Arts Centre & College Reception from High St
4. Bus parking and gymnasium access – Stanhope St (note 2 hour limit)
5. Bus and car parking – Dalny St (note 2 hour limit)

→
Sport Entrance / Exit

EMMANUEL COLLEGE

St Paul's Campus, Blackshaws Road, Altona North

Google map link: <https://goo.gl/maps/bbzE2w4JVK92>



Map Details:

1. Football & cricket
2. Bus parking
3. Volleyball
4. Bus parking
5. Soccer

Sport Entrance / Exit




Google Maps link: <https://goo.gl/maps/adogrVqEBAr>



Version 2 – November 2016

1. St Eugene's Park – soccer, cricket
2. Johnson Oval – football, cricket
3. Oblate Hall – basketball, changerooms & toilets (football, soccer & cricket)
4. Provence Centre – basketball, volleyball, table tennis
5. Bus – drop off & pick up zone
6. Bus parking – along Kernot Avenue past the oval and Provence Centre.

 Sport Entrance / Exit

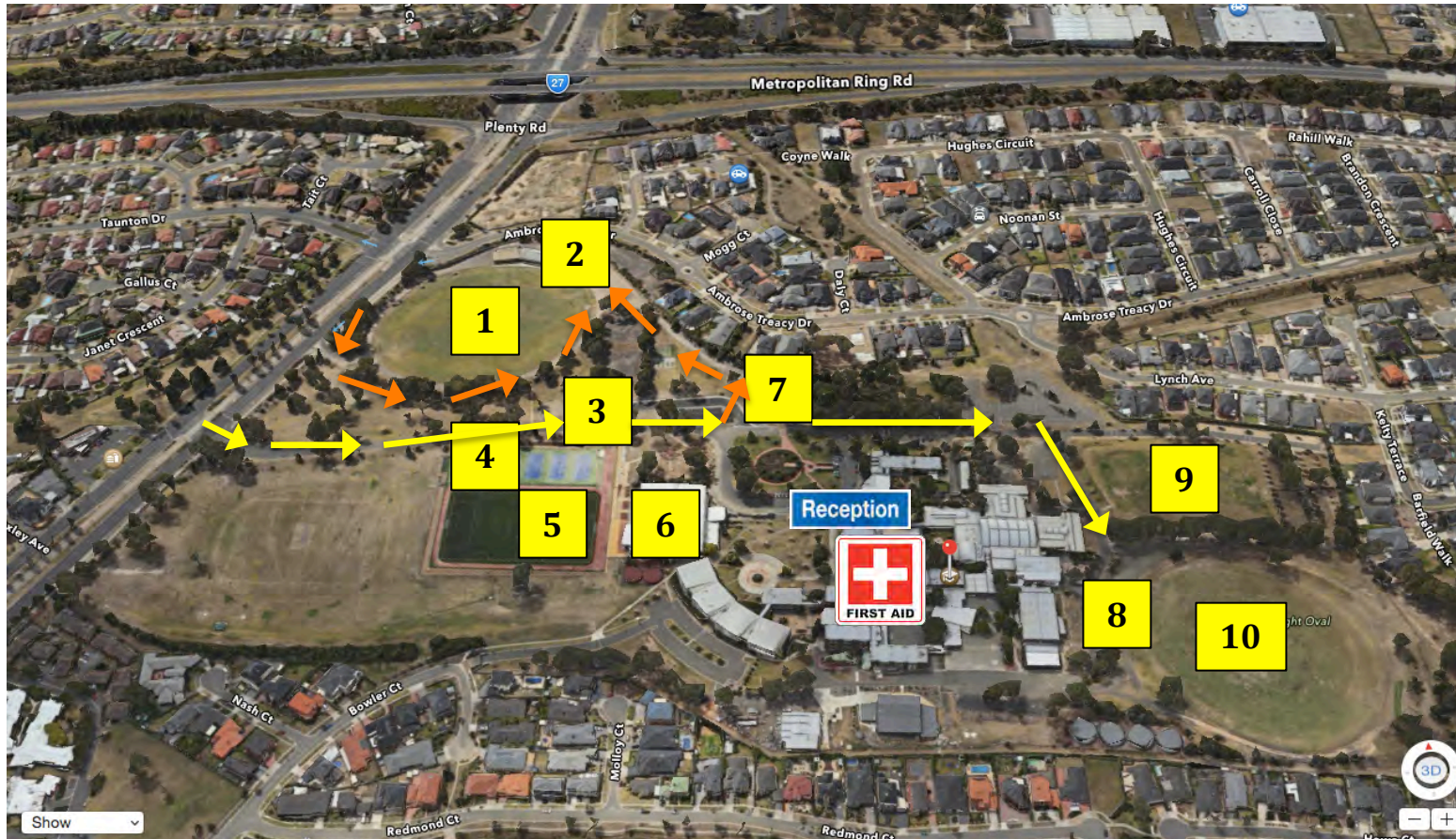
PARADE COLLEGE


BUNDOORA CAMPUS – 1436 Plenty Rd, Bundoora


Google map link: <https://goo.gl/maps/vYEDFqLYQeD2>

Map Details:

1. Garvey Oval – football, cricket
2. Toilets & changerooms (football, cricket), car parking
3. Small bus parking
4. Tennis courts
5. Bunjil Park – soccer
6. College Hall – basketball, volleyball, table tennis, toilets & changerooms
7. Bus and visitor car parking area
8. Parking for Naughtin & Wright Ovals
9. Naughtin Oval – football, cricket
10. Wright Oval – football, cricket



School Entrance / Exit 

Entry to Garvey Oval & car parking 

Note: entry for Garvey Oval off Plenty Rd is only from the southbound lane. Vehicles travelling northbound should use the main entrance to the school and then drive via the car parking area (No. 7 on map) to access Garvey Oval.

PARADE COLLEGE

PRESTON CAMPUS – Clifton Grove, Preston

Google map link: <https://goo.gl/maps/oDVQyTwWSR82>



Map Details:

1. Car & bus parking – on Clifton Grove
2. Soccer pitch
3. Volleyball

Sport Entrance / Exit



SALESIAN COLLEGE

BOSCO CAMPUS - Bosco Street, Chadstone

Google maps link: <https://goo.gl/maps/4VxbzohFvL72>



Map Details:

1. Main oval – football, cricket
2. Toilets & changerooms (football, cricket)
3. Salesian College Hall – basketball, volleyball, changerooms & toilets
4. Bus – drop off & pick up zone
5. Bus parking

Sport Entrance / Exit



SALESIAN COLLEGE

MANNIX CAMPUS – Swanson Crescent, Chadstone

Google maps link: <https://goo.gl/maps/Hfk3ddCQMS62>



Map Details:

1. Soccer pitch
2. Oval (football, cricket)
3. Toilets
4. Changerooms
5. Bus – drop off & pick up zone & bus parking

Sport Entrance /
Exit



SIMONDS CATHOLIC COLLEGE

St Mary's Campus - Victoria St, West Melbourne

Google map link: <https://goo.gl/maps/qL68mAtVkbx>



Map Details:

1. GP Room – table tennis
2. Front car park (small)
3. Bus drop off and pick zone. Bus parking on Howard St.

Sport Entrance / Exit



**Note: Simonds Catholic College has a second Campus (St Brigid's) in Nth Fitzroy.*

ST BEDE'S COLLEGE

Mentone Parade, Mentone

Google map link: <https://goo.gl/maps/YMZ6SM5W2KR2>



Map Details:

1. Main oval – football, cricket (entry off Dixon St)
2. Changerooms & toilets
3. Car parking
4. St Bede's Hall – table tennis
5. Tennis courts
6. St Bede's Sport Centre – basketball, volleyball, changerooms, toilets
7. Bus drop off & pick up zone & bus parking – Naples Rd

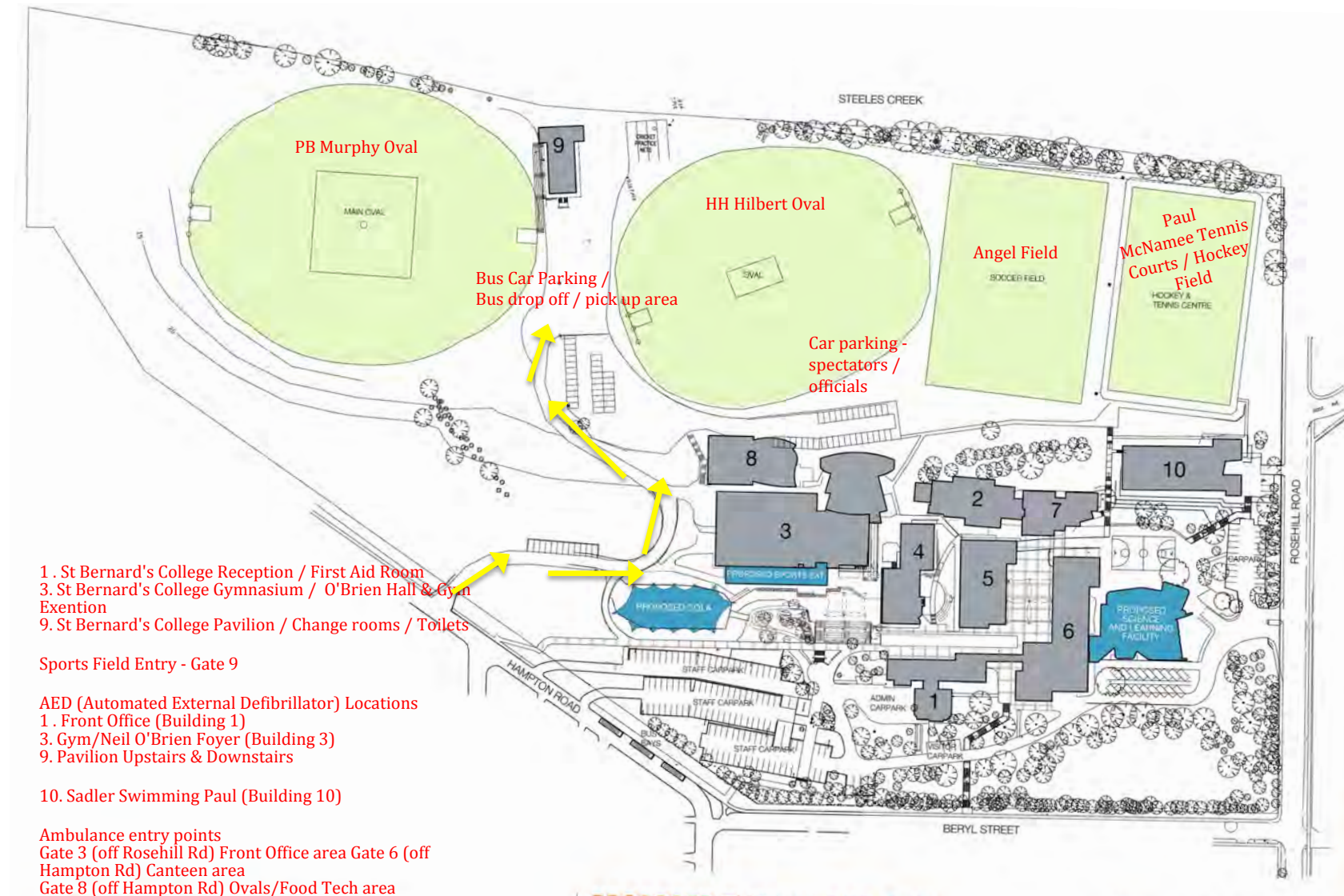
Sport Entrance / Exit



ST BERNARD'S COLLEGE

41 Rosehill Road, Essendon

Google map link: <https://goo.gl/maps/7dFR7hzfxPv>

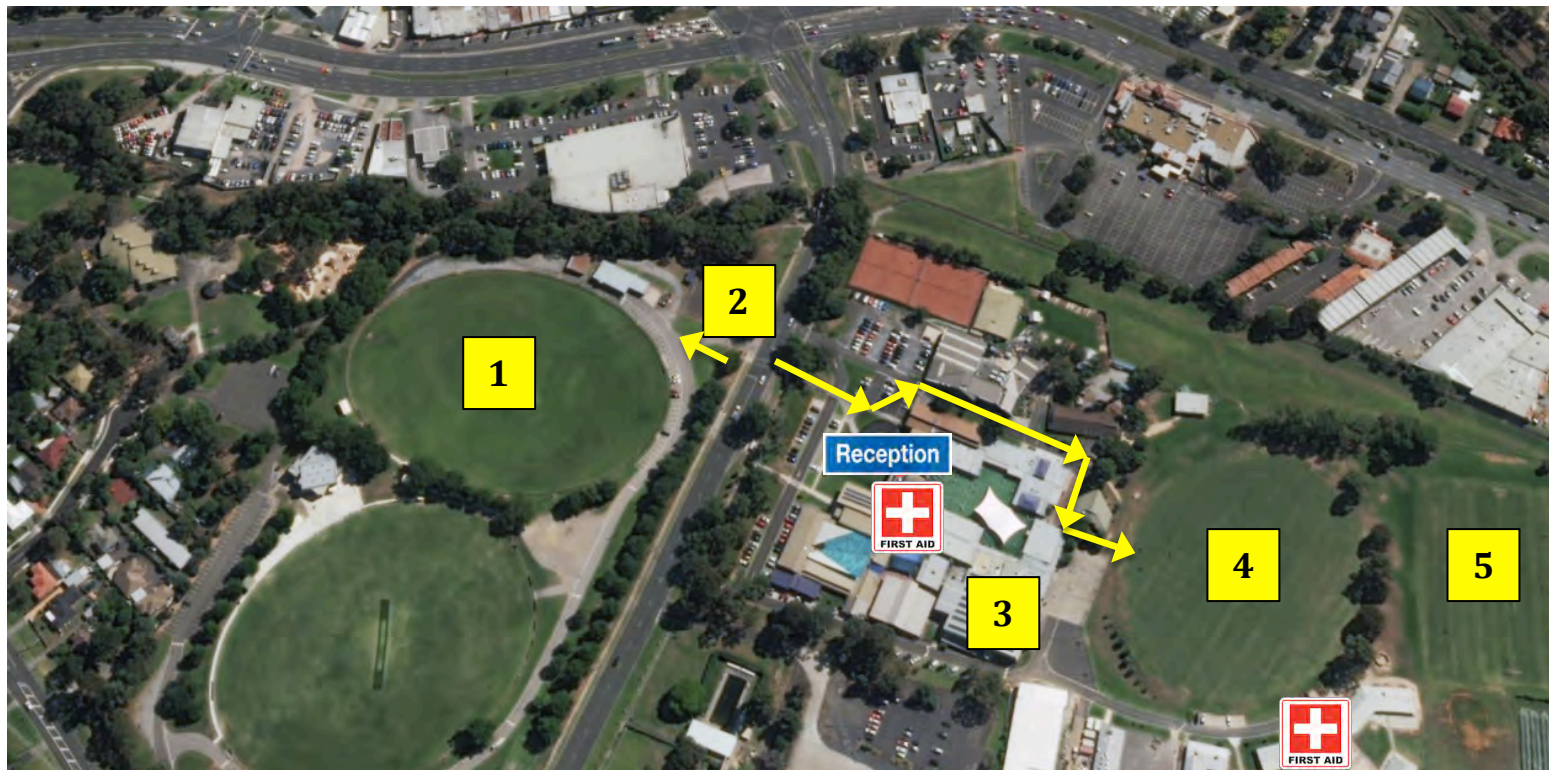


Version 2 – November 2016

ST JOSEPH'S COLLEGE (FERNTREE GULLY)

5 Brenock Park Drive, Ferntree Gully

Google map link: <https://goo.gl/maps/FGzJY4WKq842>



Map Details:

1. Football & cricket
– Yr 9, 10 & Senior
2. Bus drop off and
pick up zone, and
bus parking
3. Basketball,
volleyball and
table tennis
4. Football & cricket
– Yr 7 & 8
5. Soccer

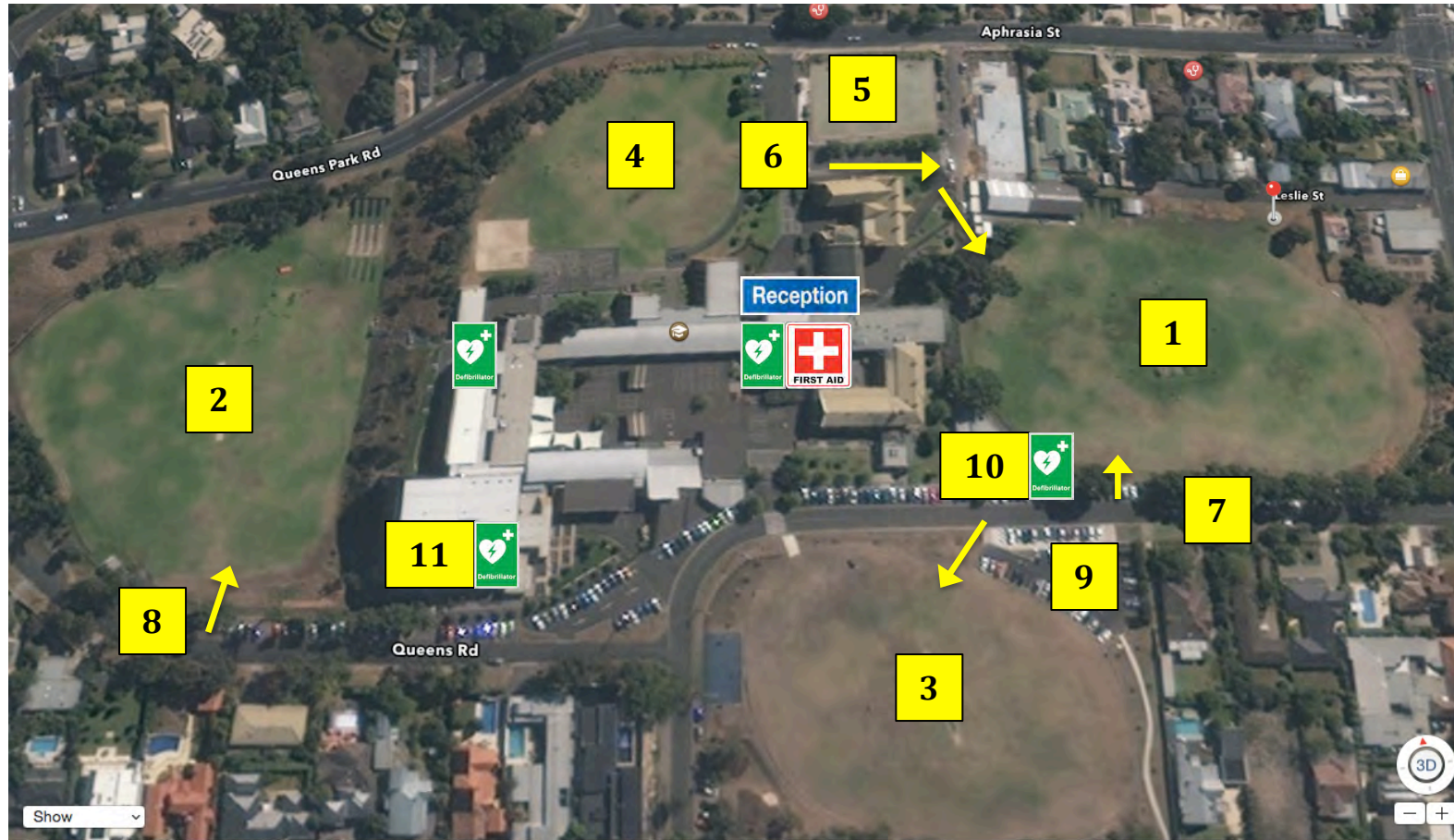
Sport Entrance /
Exit



ST JOSEPH'S COLLEGE (GEELONG)

Aphrasia Street, Newtown

Google map link: <https://goo.gl/maps/XD9qsuzkuuQ2>



Map Details:

1. Zampatti Oval
2. Carey Oval
3. O'Driscoll Oval
4. Aphrasia Oval
5. Tennis courts
6. Bus drop off & pick up zone
7. Bus parking - Zampatti & O'Driscoll Ovals (Queens Rd)
8. Bus parking - Carey Oval (Queens Rd)
9. Car parking - spectators & officials
10. Changerooms & toilets - Zampatti & O'Driscoll Ovals
11. Toilets - Carey Oval

Sport Entrance / Exit



WHITEFRIARS COLLEGE

156 Park Road, Donvale

Google map link: <https://goo.gl/maps/SYS5fNk1mVP2>



Map Details:

1. Soccer pitch
2. Bottom oval – cricket, football
3. Bus drop off / pick up & parking for all sports. Enter via the bottom gate.
4. Guggenheimer Gym – basketball, volleyball
5. Changerooms & toilets – both gyms and main oval
6. McPhee Gym – basketball, volleyball
7. Main Oval – football, cricket
8. Car parking – near main entrance

Sport Entrance / Exit



Note: parking next to the main oval is restricted during 2017 due to construction work.